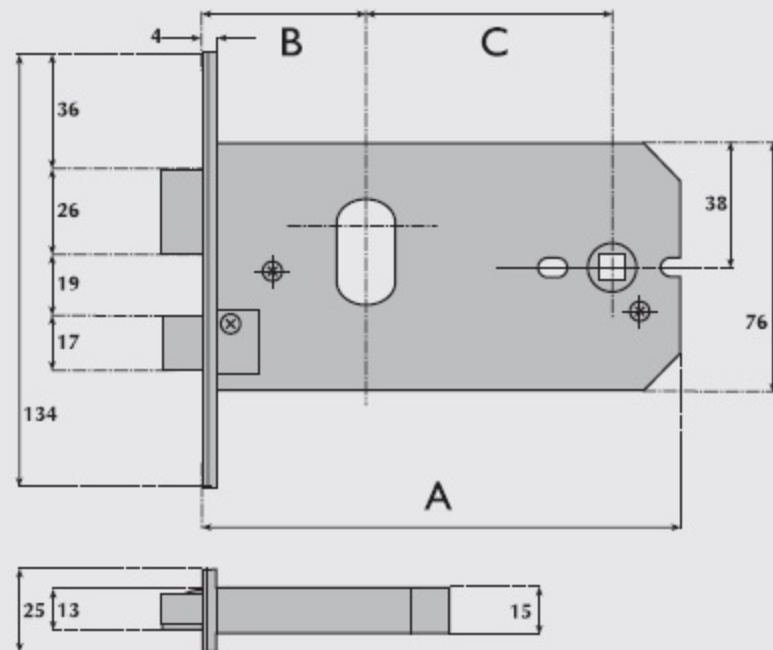
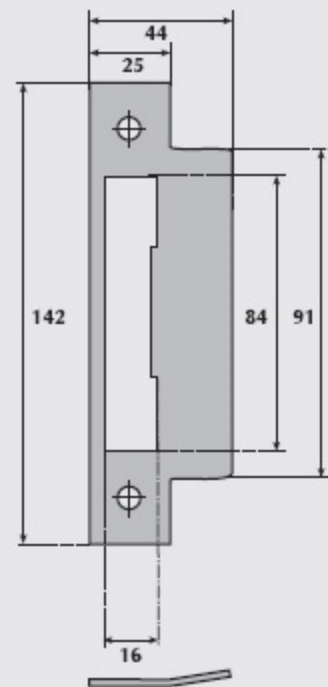
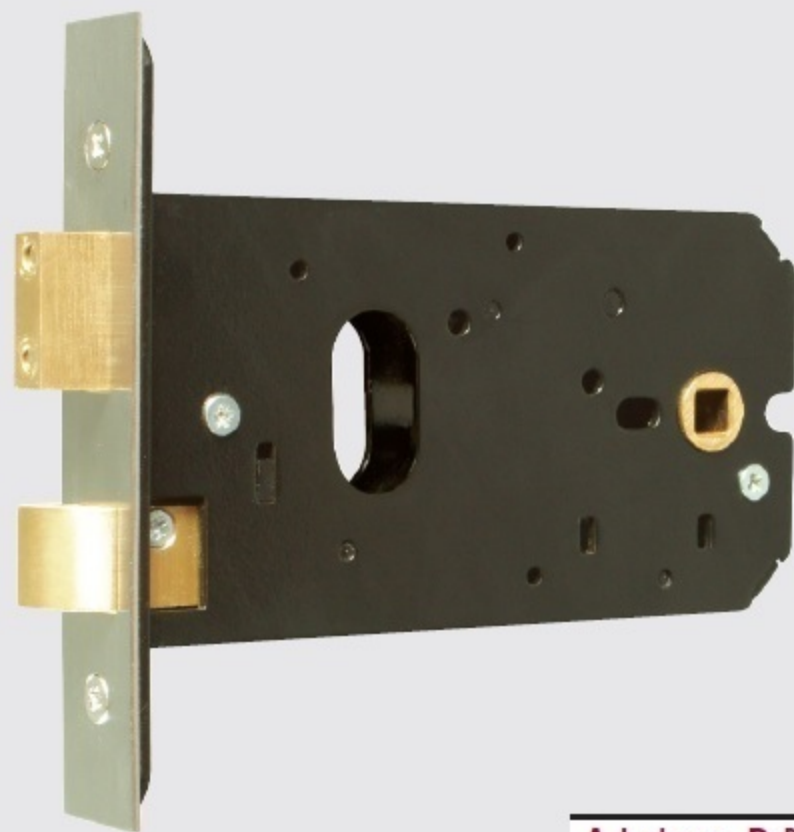


B2502-0 Oval-profile cylinder horizontal mortice lock



A Lockcase	B Backset	C Centres
147mm	51mm	74mm

OPERATION:

Latchbolt operated by knob or lever from either side.
Deadbolt operated by key from either side using a double cylinder or by key outside and thumbturn inside using a single cylinder with turn.

SPECIFICATION:

- CASE.** Steel, powder coated black, pierced to accept 38mm centre horizontally opposed bolt through fixing furniture.
- STRIKE PLATE.** Finished to match forend - steel.
- FOREND.** Brass polished, satin or BMA.
Stainless steel, satin or polished.
Available square or radiussed - please specify.
- LATCHBOLT.** Brass, reversible without opening case. Projection 11mm.
- DEADBOLT.** Brass, with two hardened steel rollers. Throw 12mm.
- FOLLOWER.** Brass, to suit 8mm square spindle.
Standard sprung two-way action for knob furniture.
Heavy duty sprung one-way action for lever furniture. Please specify.
- CYLINDER.** Not supplied. May be used with the following cylinders:
a) Key either side.
b) Turn inside and key outside.