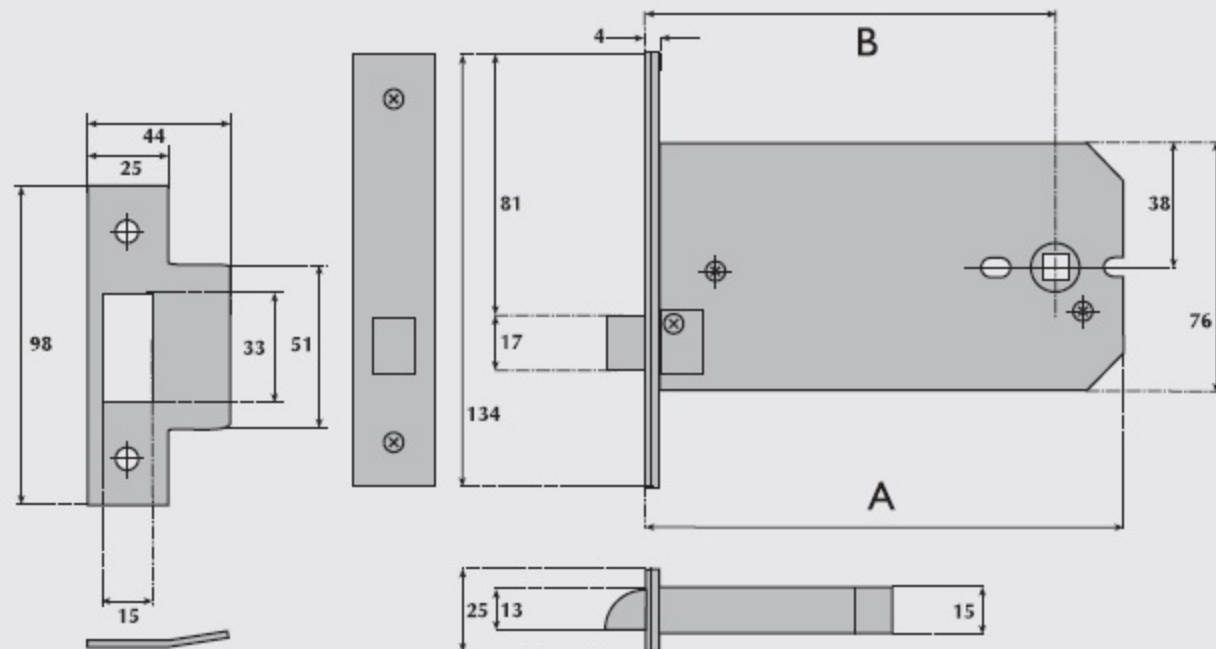
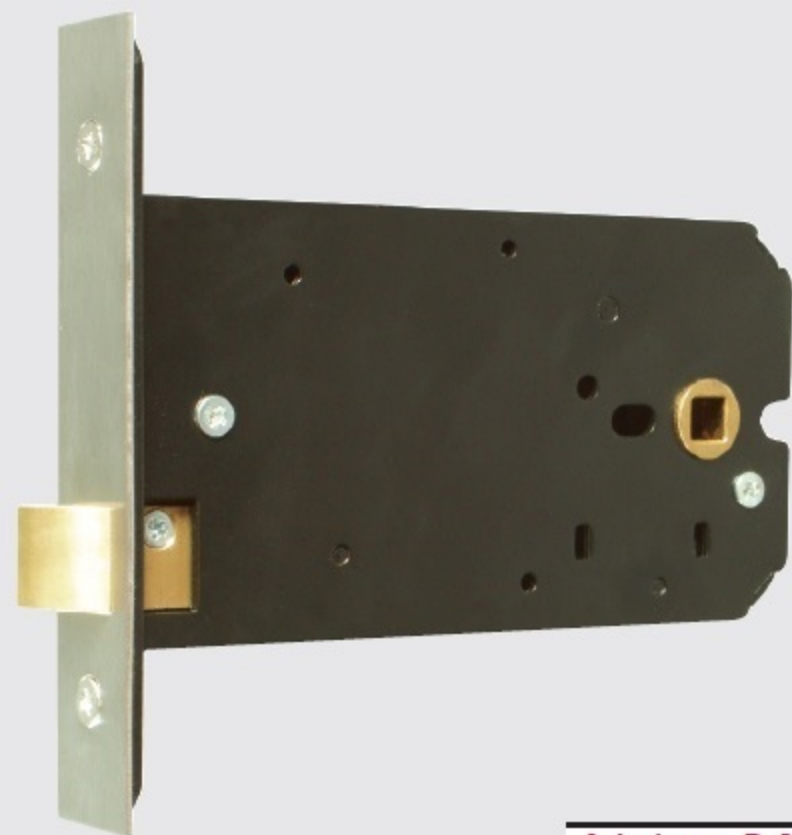


# B2515 Horizontal mortice latch



A Lockcase	B Backset	C Centres
147mm	125mm	—

## OPERATION:

Latchbolt operated by knob or lever handle from either side.

## SPECIFICATION:

### CASE.

Steel, powder coated black, pierced to accept 38mm centre horizontally opposed bolt through fixing furniture.

### STRIKE PLATE.

Finished to match forend.

### FOREND.

Brass polished, satin or BMA.

Stainless steel, satin or polished.

Available square or riuessed - please specify.

### LATCHBOLT.

Brass, reversible without opening case. Projection 11mm.

### FOLLOWER.

Brass, to suit 8mm square spindle.

Standard sprung two-way action for knob furniture.

Heavy duty sprung one-way action for lever furniture. Please specify.